

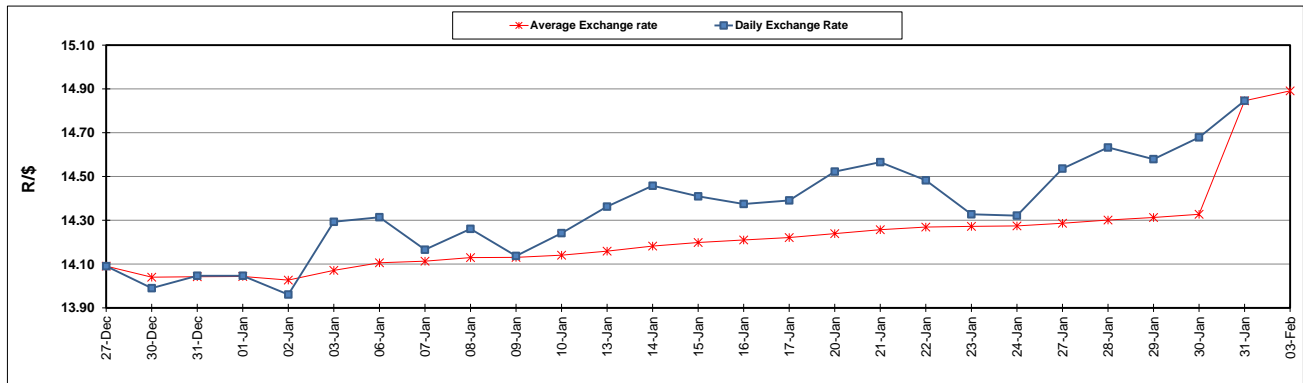
	PETROL 95 ULP	PETROL 93 ULP & LRP	DIESEL 0.05%	DIESEL 0.005%	ILL. PAR.
GAUTENG PUMP PRICE (SA c/l) AS FROM 05/02/2020	1,603.000	1,571.000	-	-	-
WHOLESALE PRICE (SA c/l) AS FROM 05/02/2020	-	-	1,457.260	1,462.660	924.728
SINGLE NATIONAL MAXIMUM RETAIL PRICE	-	-	-	-	1,176.000
BASIC FUEL PRICE - 03/02/2020 (SA c/l)	666.601	656.480	677.414	682.859	661.052
PRESS RELEASE CONTRIBUTION TO BFP 31/01/2020 - 03/02/2020 (SA c/l)	699.970	677.970	742.630	748.030	737.128
UNIT OVER/(UNDER) RECOVERY - 03/02/2020 (SA c/l)	33.369	21.490	65.216	65.171	76.076
AVERAGE BASIC FUEL PRICE 31/01/2020 - 03/02/2020	667.484	656.202	679.400	684.754	668.821
AVERAGE UNIT OVER/(UNDER) RECOVERY 31/01/2020 - 03/02/2020	32.486	21.769	63.230	63.277	68.307

ANALYSIS MOVEMENT OF AVERAGE OVER/(UNDER) RECOVERY

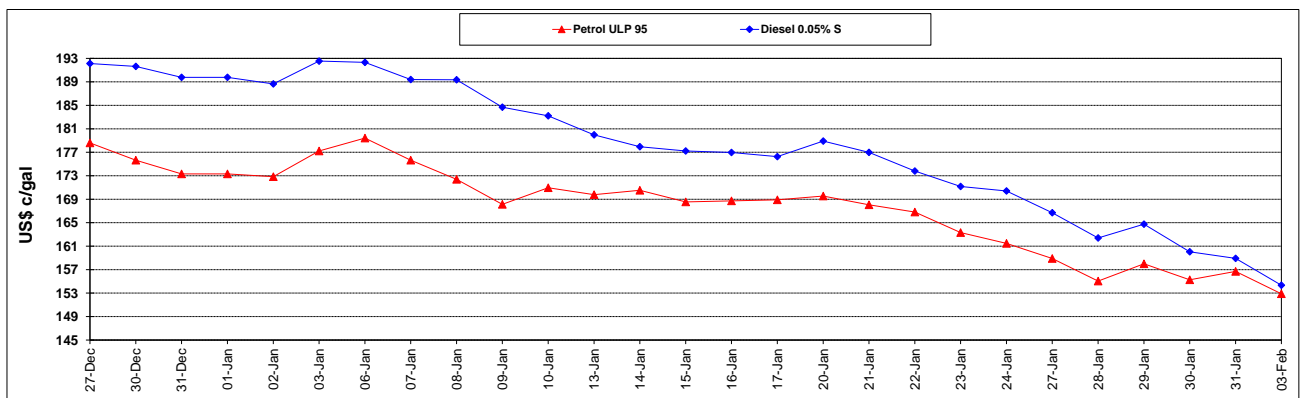
	PETROL 95	PETROL 93	DIESEL 0.05%	DIESEL 0.005%	ILL. PAR.
- MOVEMENT IN INTERNATIONAL PRODUCT PRICES	57.749	46.604	88.944	89.192	93.620
- MOVEMENT IN EXCHANGE RATE	(25.263)	(24.836)	(25.714)	(25.916)	(25.313)
AVERAGE UNIT OVER/(UNDER) RECOVERY 31/01/2020 - 03/02/2020	32.486	21.769	63.230	63.277	68.307

R/\$ EXCHANGE RATE - (R/\$14.9362 - 03/02/2020)

EXCHANGE RATE USED IN BASIC FUEL PRICE



INTERNATIONAL PRODUCT PRICES OF BASKET USED IN BASIC FUEL PRICE



BASIC FUEL PRICE IN SA CENTS PER LITRE

